

FRESH AIR
FOR YOUR RESIDENTIAL VENTILATION



www.ventomaxx.de

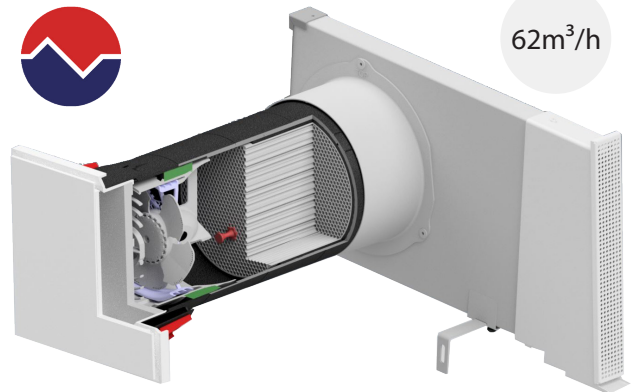
HRV MAKANI® R

Decentralized ventilation with heat recovery

VENTOMAXX®

HRV MAKANI® R

The HRV MAKANI® is the latest iteration of the successful HRV PLUS and RONDO series, featuring updated high-performance components. It sets the standard in decentralized ventilation with heat recovery.



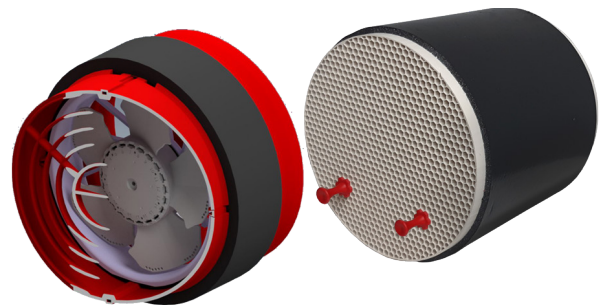
- ⊘ Increase air flow rate (up to 62m³/h - 36,5 cfm)
- ⊘ High energy efficiency due to 85% heat recovery efficiency
- ⊘ Highest sound insulation to protect against external noise (up to 69 dB D_{n,e,w})
- ⊘ Short installation lengths (starting at 280mm) for all structural requirements
- ⊘ Almost completely silent (sound pressure level starting at 9,4 dB (A))
- ⊘ Wide range of mounting and installation options for maximum flexibility
- ⊘ Facade covers in individual RAL colors for a seamless integration into the architecture

EFFICIENT AND EFFECTIVE

FAN UNIT AND HEAT EXCHANGER

Powerful inside

The MAKANI® series is powered by a high-performance heat exchanger and a fan that is specifically designed for decentralized ventilation. These two components are the core of the system, resulting in improved indoor air quality and cost savings on heating and energy.



CERAMIC HEAT EXCHANGER

- Optimized surface due to honeycomb ceramics
- High thermal conductivity with highest possible heat recovery at low pressure drop
- Additional foam coating guaranteeing high air performance and heat recovery

FAN UNIT

- Design specially optimized for push-pull use with EC-technology
- Constant air flow, both outside in and inside out
- High pressure stability with changing and high wind loads
- Scarcely audible switching process (push-pull)

SIMPLE AND TAILORED TO YOUR NEEDS

CENTRAL CONTROL UNITS

Choose according to your needs

The MAKANI® series heat recovery units offer two different control units to choose from, depending on your specific needs in terms of functionality, number of fans and ease of use.



ZS-PLUS

- Control 2 to 4 units
- Paired / unpaired operation possible
- 4 programs / 5 air levels
- Integrated humidity sensor
- Flush-mounted or control cabinet installation

ZS-TOUCH

(as of summer 2023)

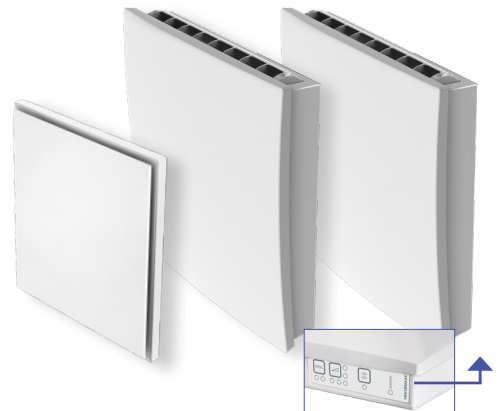
- Control of 2 to 8 fan units
- 4 programs / 5 air levels
- Other functions: time control, pause mode
- Multi-zone operation possible
- Integrated temperature and hygro sensor, as well as multiple interfaces for further connections

DISCREET AND FUNCTIONAL

ROOMSIDE COVERS

Elegant design elements for interior

The selection of the roomside cover guarantees seamless integration of the HRV MAKANI® into any interior design. Its timeless aesthetic, combined with optimal air flow and customizable air flow directions, guarantees a superior indoor climate.



IQ DESIGN Cover

- Smallest dimensions in its class
- Simple design
- Mechanically adjustable air flow routing in three positions
- 360° discharge direction
- Integrated hygiene filter ISO Coarse 45% (G3) or optional pollen filter ISO ePM10 50% (M5)

PLUS DESIGN COVER

- Adjustable air outlet roller on top with adjustable air flow routing
- Individual adjustment of the air flow direction
- Integrated hygiene filter ISO Coarse 50% (G3) or optional pollen filter ISO ePM10 65% (M6)

PLUS DESIGN COVER

(as of summer 2023)

- Decentralized control unit with communication via the existing power grid
- Smart control directly at the cover
- Without and with hygro sensor (V-1 PLUS / V-3 PLUS)
- Individual adjustment of the air outlet angle directly at the cover

Control unit	ZS-PLUS	ZS-TOUCH	V-1 PLUS	V-3 PLUS
		(as of summer 2023)	(as of summer 2023)	(as of summer 2023)
Operation				
Centralized on-unit control	●	●	-	-
Decentralized on-unit control	-	-	●	●
Number of fan units	2 to 4	2 to 8	1 to 14	1 to 14
Programs / Functions				
Efficiency ventilation	●	●	●	●
Pulse ventilation / Permanent ventilation	●	●	●	●
Cross ventilation	●	●	●	●
Sensor ventilation	●	●	-	●
Time control	-	●	-	-
Filter change indication	●	●	●	●
Air levels	5			
Installation				
Flush-mounted installation	●	●	-	-
Control cabinet installation	●	●	-	-
Degree of protection / Protection class	IP 20/II			
Roomside covers				
PLUS DESIGN cover				
Air flow rate (min.-max.)	[m ³ /h] [cfm]	5,7 - 62,8 3,4 - 36,5		
Power consumption (min.-max.)	[W]	2,4 - 13,9		
Sound pressure level (SPL) ¹	dB (A)	9,4 - 52,3		
Sound insulation ²	dB D _{n,e,w}	43 - 69		
IQ DESIGN Cover				
Air flow rate (min.-max.)	[m ³ /h] [cfm]	4,9 - 60,2 2,9-35,4	-	-
Power consumption (min.-max.)	[W]	2,4 - 14,3	-	-
Sound pressure level ¹	dB (A)	12,6 - 59,0	-	-
Sound insulation ²	dB D _{n,e,w}	43 - 69		

¹ Emission sound pressure level, Lp(A) TUEV measurement at a distance of 1 m

² Measured according to EN 140-10 / EN ISO 140-2 / EN ISO 717, according to test certificate ift-Rosenheim; depending on mounting type

● standard / integrated
- not available

VENTOMAXX[®]

www.ventomaxx.de

Ventomaxx GmbH
Roider-Jackl-Str. 5
D-84036 Landshut
Germany

☎ +49 (0) 871 953 406 - 0
📍 +49 (0) 871 953 406 - 29
✉ info@ventomaxx.de

The information in this brochure is prepared to the best of our knowledge and is intended to give you practical support in your planning. However, we ask for your understanding that we provide these documents without being legally binding. For all our terms and conditions of Ventomaxx GmbH in the currently valid version. We reserve the right to make technical changes. **Version: 01 /2023**